

High Power 12dBi Omni-Directional Wi-Fi Antenna

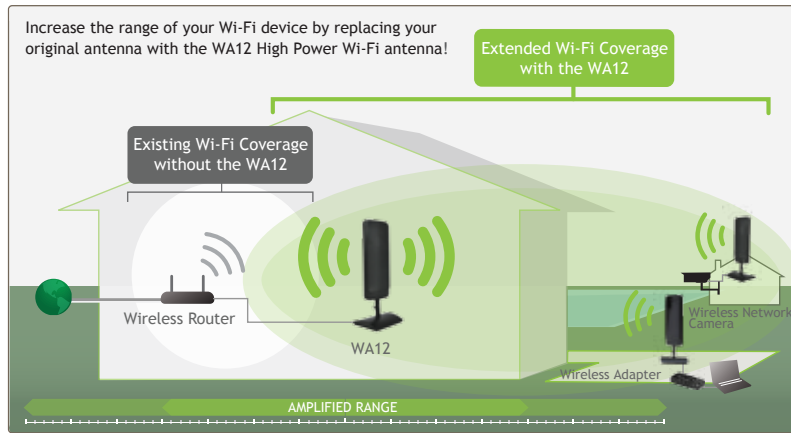
(for 2.4GHz 802.11b/g/n devices)

WA12

The Amped Wireless High Power 12dBi Omni-Directional Wi-Fi Antenna is designed to increase the signal strength and range of your 2.4GHz 802.11b/g/n Wi-Fi devices with detachable antennas. The high gain antenna provides Wi-Fi devices, such as routers, access points, adapters, cameras and bridges, with more powerful, 360 degree wireless coverage. The WA12 increases the signal strength and overall range of the device it is attached to.



How it Works:



Advanced Amped Technology:

Wireless Amplifiers and High Gain Antennas:

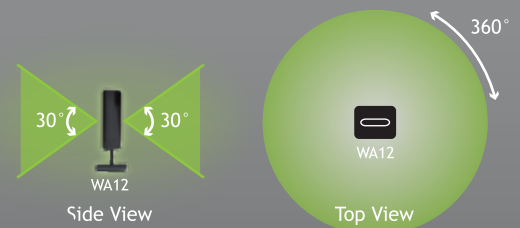
An advanced antenna design maximizes the wireless range of the Wi-Fi device it the WA12 is attached to. The WA12 increases antenna gain to 12dBi (from 0-1 dBi on average) and directs the wireless signal in a 360 degree pattern for a boost in wireless range and performance.



Key Features

- Boost your Wi-Fi performance by up to 3X*
- Works with all brands of Wi-Fi devices with detachable antennas
- Safe for use in all homes and offices
- Antenna swivels and may be removed from the base for different installation options

Wireless Coverage Pattern

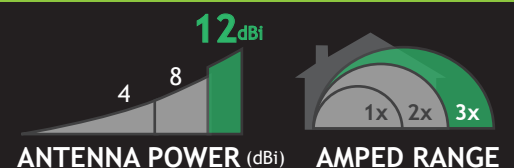


Amped Wireless Technology



- 12X the power of standard Wi-Fi antennas (standard Wi-Fi antennas have an antenna gain of 0 to 1 dBi)
- Increases wireless range by up to 3X!

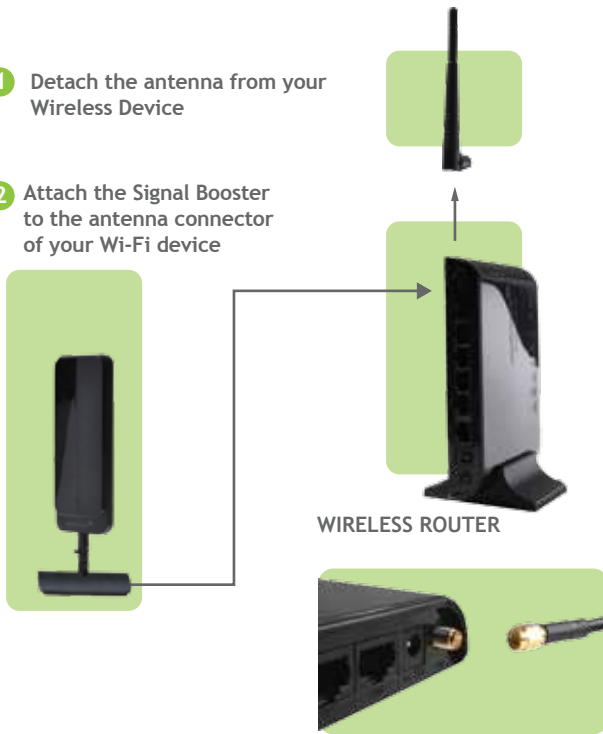
Wireless Performance



Plug & Play Setup

1 Detach the antenna from your Wireless Device

2 Attach the Signal Booster to the antenna connector of your Wi-Fi device



Works with Reverse SMA Antenna Connectors

Mounting Options



Desktop

Place the antenna on any flat surface for easy placement



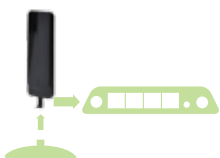
Wall:

Includes mounting holes and accessories to mount the antenna on any wall



Magnetic Mount:

The magnetic base allows for mounting on metal surfaces, such as the side of a computer case



Direct Mount:

The antenna can be removed from its base and connected directly to the Wi-Fi device's antenna connector

Product Specifications:

Wireless Standard: 802.11b/g/n

Frequency Band: 2.4 - 2.48 GHz

Antenna Gain: 12dBi

Antenna Connector: Reverse SMA Plug

VSWR: 2.0:1 Max

Antenna Pattern:

- H Plane: 360° Degrees
- V Plane: 30° Degrees

Antenna Cable Length: 1.5 Feet

Antenna:

- Detachable High Gain 12dBi Wi-Fi Antenna

Works With:

Any 2.4GHz Wi-Fi device with a detachable antenna:

- Wireless Routers / Access Points
- Wireless Adapters
- Wireless Network Cameras
- Wireless Bridge / Repeaters
- Wireless Print Servers
- Wireless Network Storage Devices
- Wireless Media Players

System Requirements

- Wireless b/g/n Device with a detachable antenna
- Reverse SMA Jack Antenna Connector (for the wireless device)

Package Contents:

- One High Gain 12dBi Wi-Fi Antenna
- One Magnetic Antenna Mount/Base
- One Quick Installation Guide

Designed by Amped Wireless in the USA

Amped Wireless

13089 Peyton Dr. #C307
Chino Hills, CA 91709

www.ampedwireless.com

1(888) 573-8830